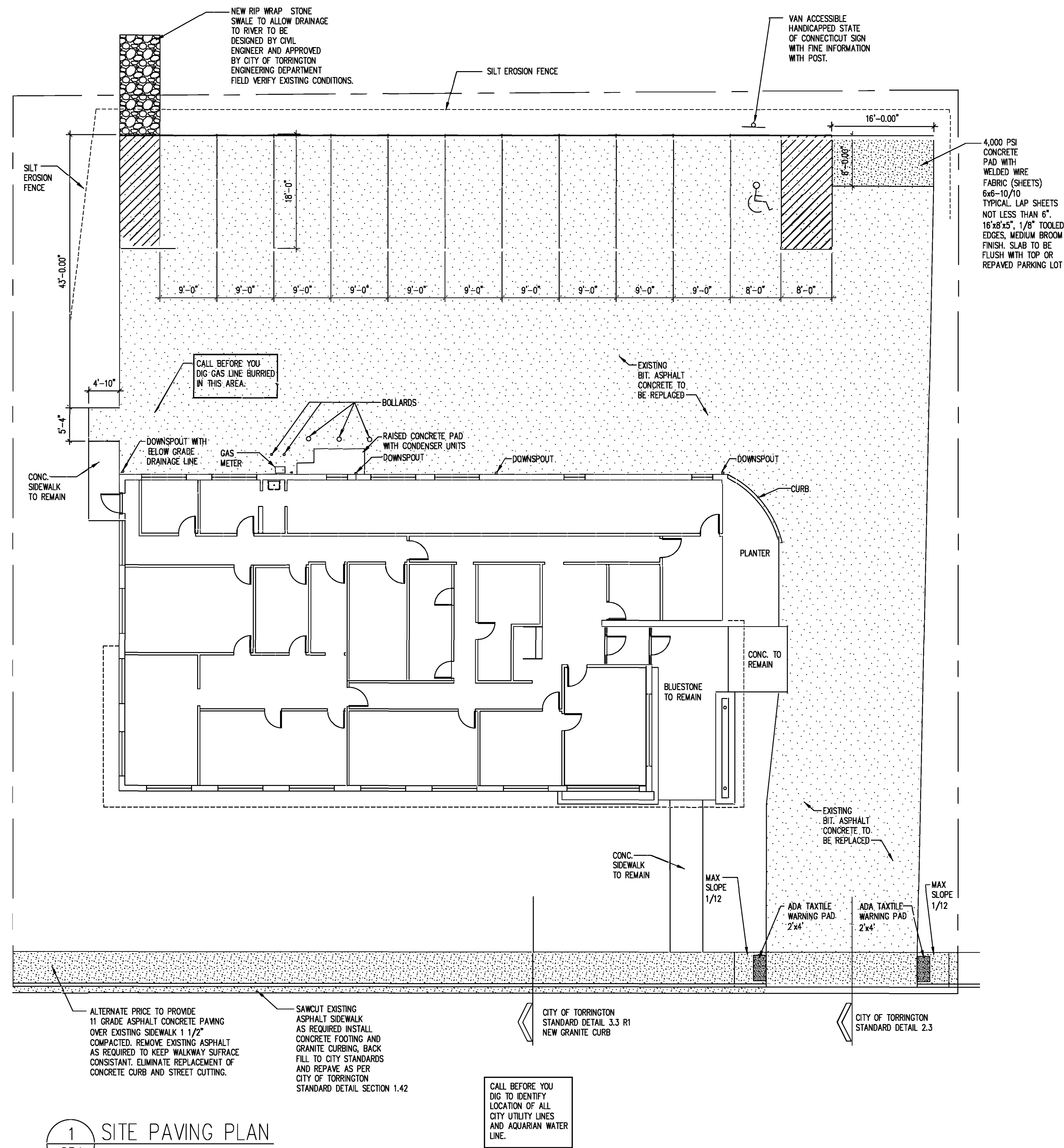
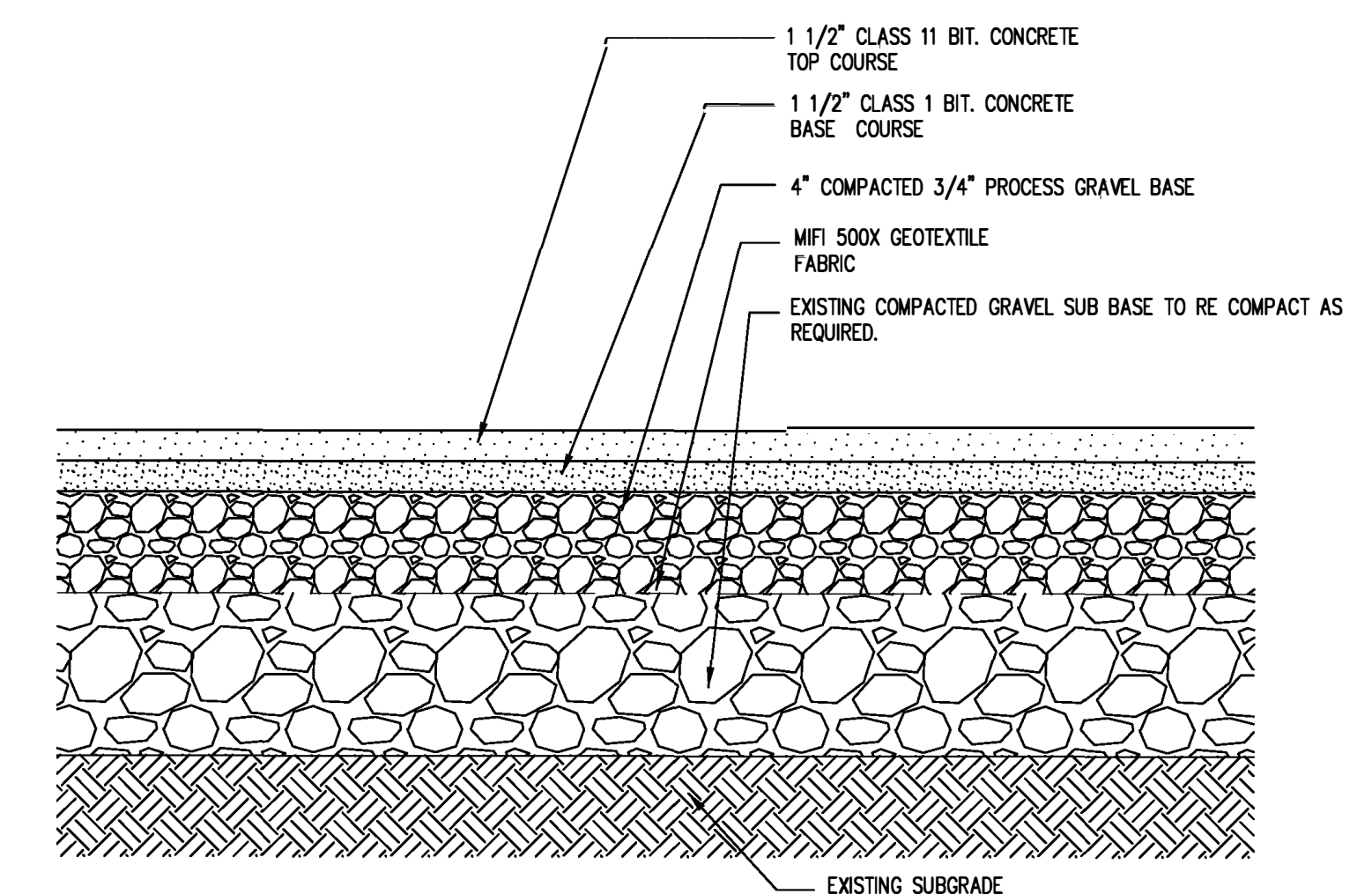


C:\WINDOWS\DESKTOP\PROJECTS\MCCALL FOUNDATION PROJECTS\883 MAIN STREET PAVING PLAN.DWG 5/14/24 5:14 PM



1 SITE PAVING PLAN
SP1 1/10"=1'-0"



1 TYPICAL PAVED PARKING LOT SECTION
SP1 1.5"=1'-0"

- REMOVE EXISTING BIT. ASPHALT CONC AND BASE COURSE AS REQUIRED FOR INSTALLATION OF NEW BIT. ASPHALT PAVING AND BASE COURSES.
- REMOVE EXISTING CONCRETE / ASPHALT SIDEWALK, CONCRETE STREET CURB AND SAW CUT EXISTING ROADWAY AS REQUIRED FOR INSTALLATION OF NEW CONCRETE FOUNDATION FOR THE GRANITE CURB.
- NEW CONCRETE SIDEWALK TO BE INSTALLED AS PER CITY OF TORRINGTON SIDEWALK STANDARD DETAILS.
- NEW BASE COURSE AND BIT. ASPHALT AT STREET TO BE AS PER CITY OF TORRINGTON STANDARD DETAIL.
- BOLLARDS ARE TO BE PROTECTED DURING PAVING PROCESS, OR REMOVED AND REINSTALLED AS PER CONTRACTORS CHOICE.
- ROCK RIP-RAP WIER TO BE DESIGNED BY CIVIL ENGINEER AND APPROVED BY CITY OF TORRINGTON ENGINEERING DEPARTMENT, TO ALLOW WATER TO FLOW INTO RIVER FROM PARKING LOT.
- CONTRACTOR TO FIELD VERIFY EXISTING PAVED AREA AND LENGTH OF SIDEWALK, AND SIDEWALK CURB AND REQUIRED STREET CUT PRIOR TO BIDDING PROJECT. DRAWINGS ARE AN ESTIMATE OF EXISTING JOB CONDITIONS.
- CONTRACTOR TO INSTALL CAUTION TAPE AS REQUIRED TO KEEP PEOPLE FROM ENTERING PARKING LOT DURING REPAVING PROJECT.
- CONTRACTOR TO PUT UP CAUTION TAPE ONCE PAVING IS COMPLETE AND LET OWNER'S REPRESENTATIVE KNOW WHEN STAFF CAN USE PARKING LOT FOR PARKING.
- CONTRACTOR RESPONSIBLE FOR PROVIDING ALL SAFETY MEASURES REQUIRED WHEN INSTALLING NEW GRANITE CURBS IN ACCORDANCE WITH THE CITY OF TORRINGTON REQUIREMENTS.
- PRIOR TO START OF CONSTRUCTION CONTRACTOR TO PUT IN PLACE EROSION AND SEDIMENTATION CONTROL MEASURES AT THE EDGE OF PARKING AREA ADJACENT TO RIVER TO ASSURE SILT DOES NOT ENTER THE RIVER. THE SEDIMENTATION CONTROL SHALL BE CHECKED WEEKLY OR PRIOR TO ANY MEASURABLE PREDICTED RAIN FALL TO BE SURE IT IS IN PLACE. ALL EROSION AND SEDIMENTATION CONTROLS TO BE INSTALLED IN ACCORDANCE WITH THE STATE OF CONNECTICUT GUIDELINE FOR SOIL AND EROSION CONTROL.
- ANY AREAS DISTURBED OUTSIDE OF EXISTING PAVED AREAS BY EXCAVATION SHALL HAVE 4" OF TOP SOIL ON ALL DISTURBED AREAS. TOPSOIL TO BE FERTILIZED, SEEDED WITH GRASS AND MULCHED IMMEDIATELY.
- SEE CITY OF TORRINGTON STANDARD DETAILS AS PART OF PROJECT MANUAL OR VISIT CITY OF TORRINGTON ENGINEERING DEPARTMENT WEB SITE FOR ADDITIONAL STANDARD DETAILS.
- PROVIDE PARKING STRIPPING AND HANDICAP PARKING SYMBOL AND STRIPPING AT ACCESSIBLE SPACE. PROVIDE NOPARKING STRIPPING IN FRONT OF RIPRAP WIER.
- PROVIDE VAN ACCESSIBLE VAN PARKING SIGN AND POLE INSTALL AS PER CONDOT STANDARD DETAILS. LIST FINE ON SIGN AS PER CONNECTICUT STATE STATUTES.

ASPHALT REPLACEMENT PROJECT
883 MAIN STREET, TORRINGTON CT
FOR
MCCALL FOUNDATION INC.

Revisions:	Mark	Date

Drawing Title:

Date 6/24/2024
Scale 1/10"=1'-0"
Job No.
CDN.

Drawing No. SP1

BOE STUDIO
architects
19 Tioga Street Torrington, CT 06790
e-mail: mboestudio@gmail.com
PHONE/FAX 860-307-6816